

Fostex®

FULL RANGE SPEAKER UNIT

FE166ES-R

Features

- 'ES cone' paper made of banana plant's fiber with Radial papermaking
- ø145mm large lanthanum-cobalt magnet
- Copper-Silver alloy voice coil

Specifications

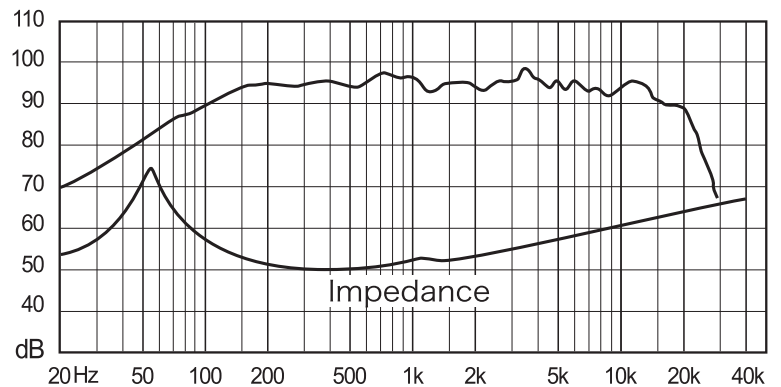
&

Thiele/Small Parameters

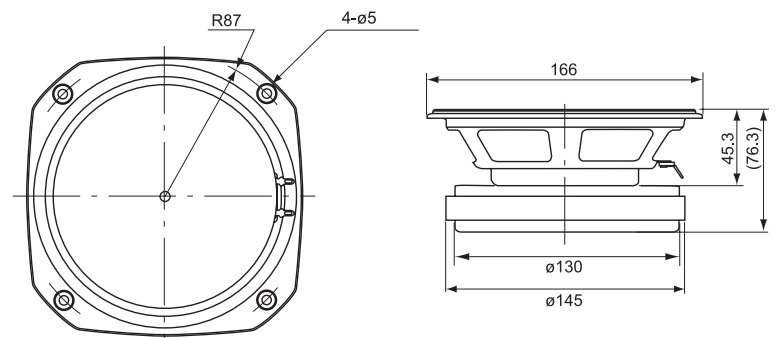
Size	:	160 mm / 6 in
Voice Coil Diameter	:	mm / in
Cast / Stamped	:	Stamped
Impedance	:	8 Ω
Reproduction Frequency Response	:	fs - 22 kHz
Sound Pressure Level	:	95.5dB/W(m)
Rated Input	:	25 W
Music Power	:	75 W
Magnet Material	:	Ferrite
Magnet Weight	:	
(main)	:	899 g / 1.982 lb
(cancel)	:	n/a g / n/a lb
Net Weight	:	2,800 g / 6.173 lb



Frequency Response / Impedance



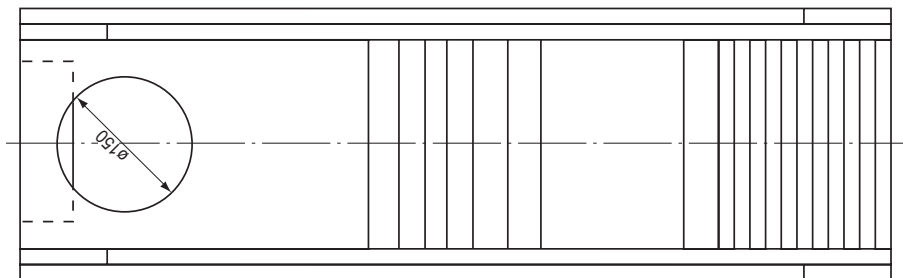
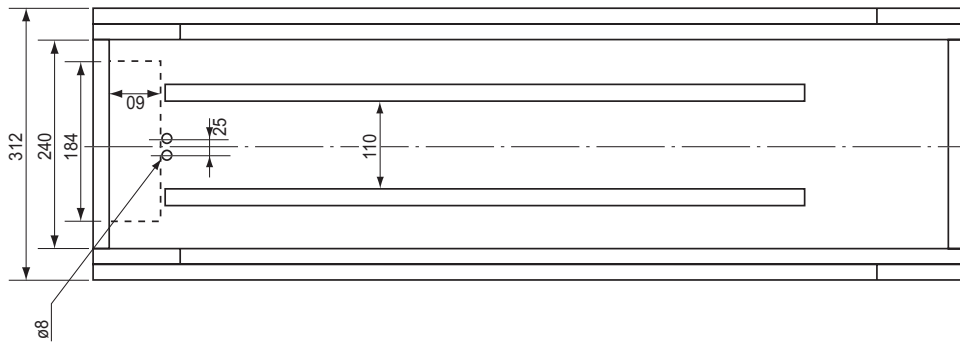
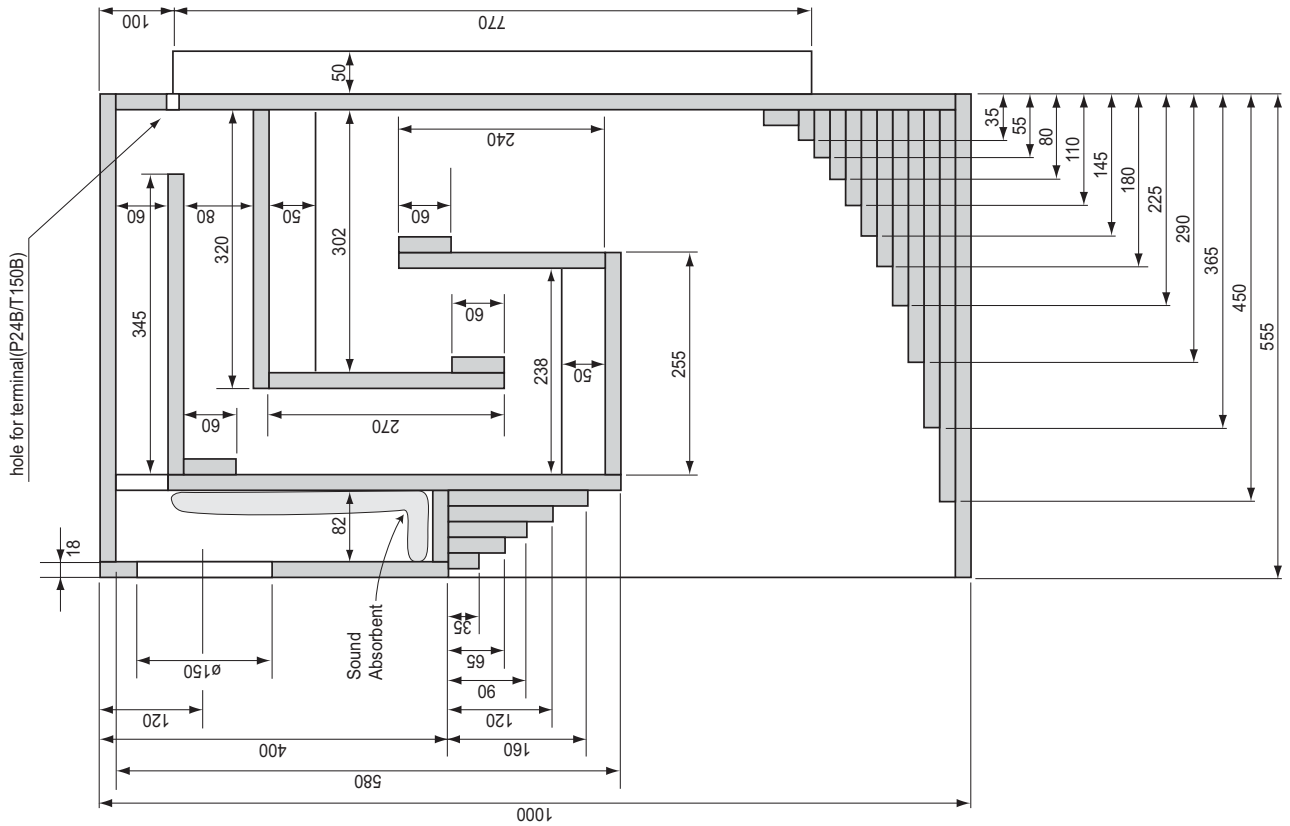
Dimensions & Mounting Information



a :	65 mm
Sd :	m ²
Zn :	8 Ω
Fs :	50 Hz
Re :	6 Ω
Le :	mH
Qms :	5.354
Qes :	0.218
Qts :	0.21
Mms :	g
BL :	Telsa/m
Vas :	31.14L
Xmax :	0.7 mm
Eff/η0 :	1.929 %
Cms :	mm/N
EBP :	229.358

Overall Diameter	:	166 mm / 6.5 in
Baffle Hole Diameter	:	150 mm / 5.9 in
Depth	:	76.3 mm / 3.0 in

Recommended Back Loaded Horn Type Enclosure



Fostex

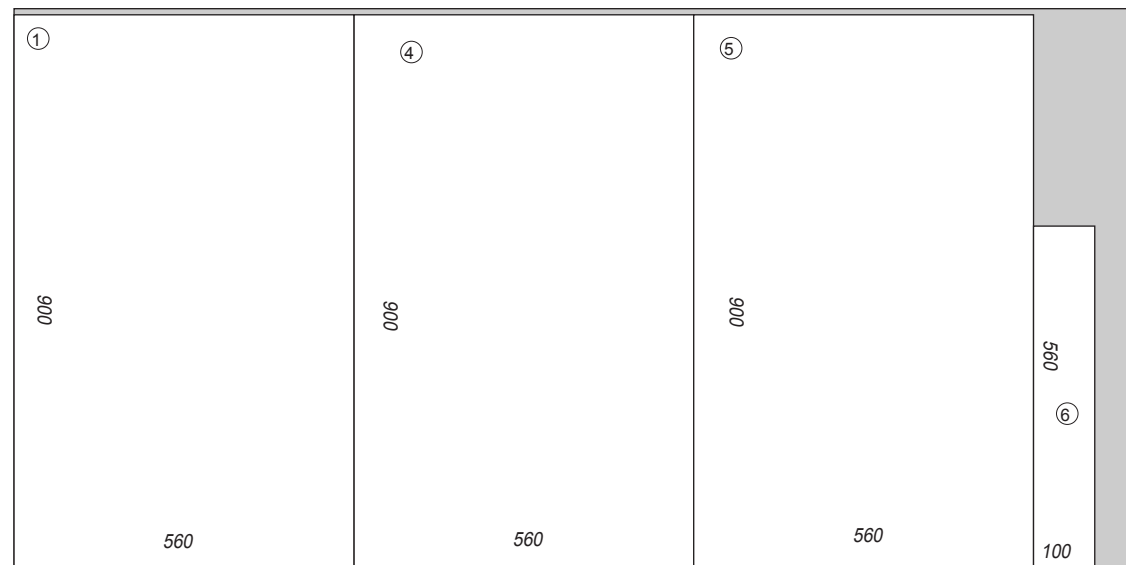
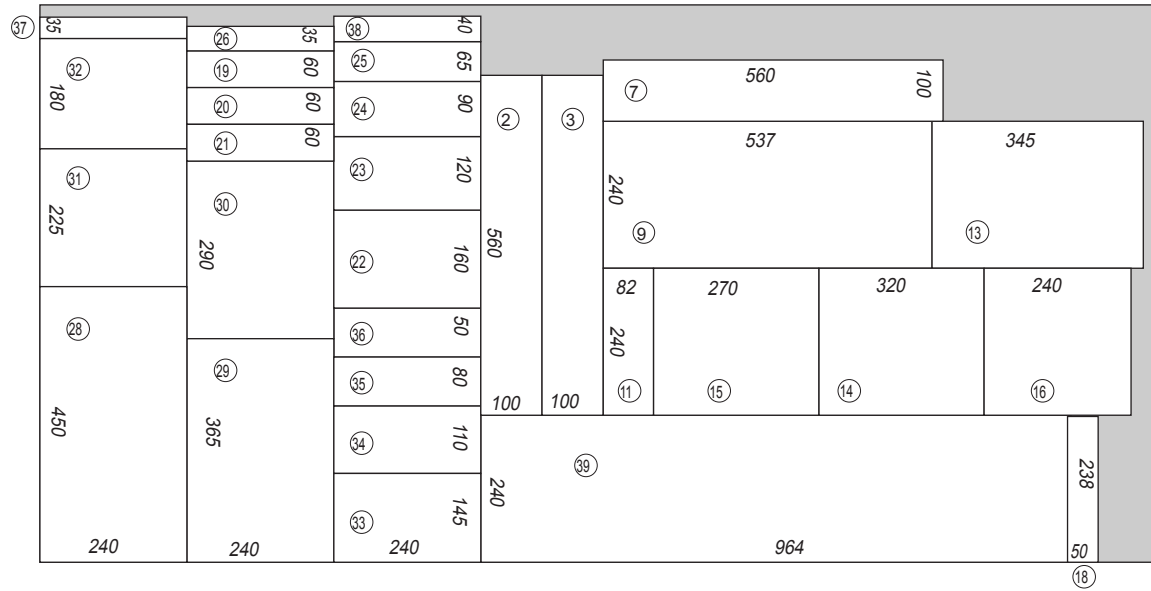
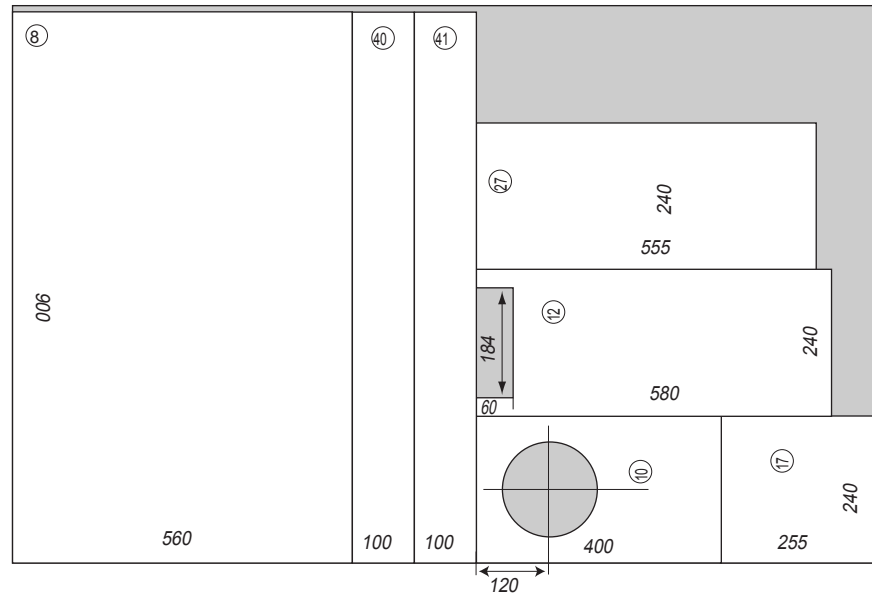
Distributor / Authorised Dealer

www.fostex.co.jp

Fostex Co., 3-2-35 Musashino, Akishima, Tokyo, Japan I96-0021
Tel: +81 (0)42-546-4974 Fax: +81 (0)42-546-9222

Madisound Speaker Components, Inc.
P.O. Box 44283
Madison, WI 53744-4283
Tel: 608-831-3433 Fax: 608-831-3771
info@madisound.com
www.madisound.com

In accordance with our policy of continuous development, we reserve the right to change specifications without notice.



18mm thickness

